

27" ELO Style Projected Capacitive Open-Frame Monitor

Product: 27" PCAP open-frame LCD monitor

Version: Ver. 1.0

Totally compatible with ELO2794L-E707022

Contents

- 1. Overview**
- 2. General description**
- 3. Interface connection**
- 4. Drawing**

27" ELO Style PCAP open frame monitor

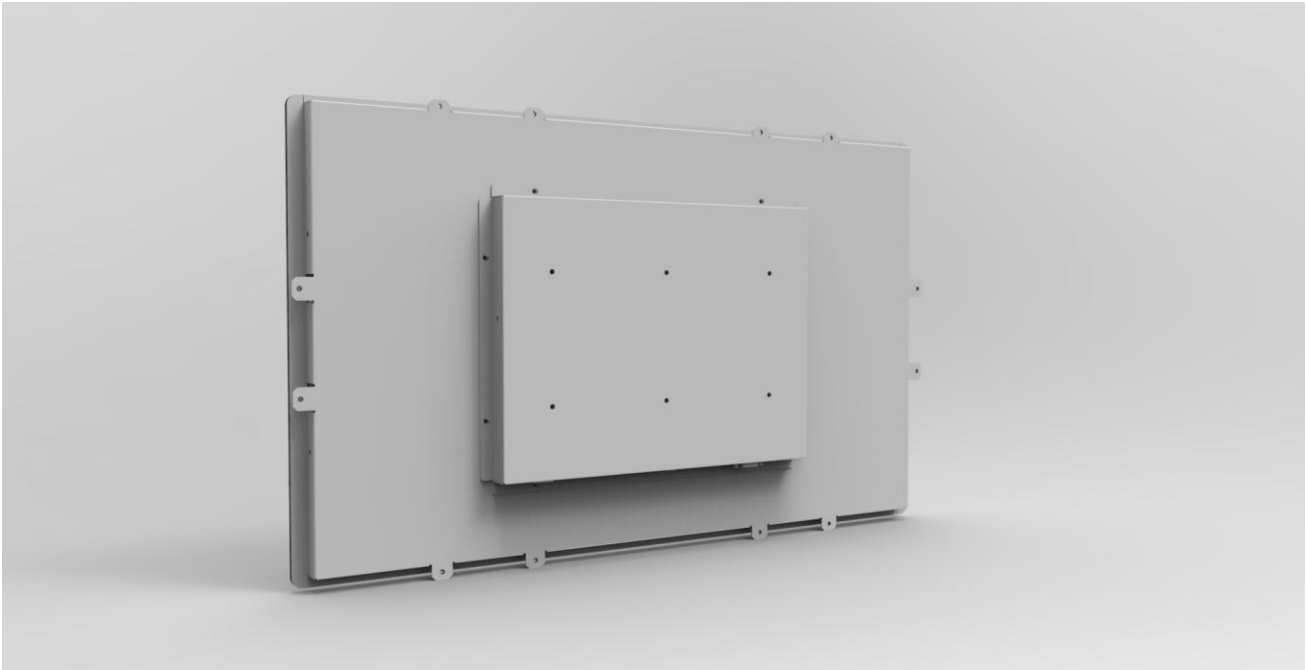
1) Features:

- ◆ 178/178 Wide view angle
- ◆ 27" 16:9 LED Backlight Monitor, 1920x1080 resolution
- ◆ 1000:1 contrast ratio
- ◆ Port: VGA, DP, HDMI, USB
- ◆ Projected Capacitive Touch Technology, 10 multi touch, thru touch
- ◆ 3mm touch glass
- ◆ Power cord, VGA cable, USB cable included
- ◆ CE, FCC

2) Photos

With PCAP Touch





2. General Description:(PCAP Touch)

Monitor specification

Screen diagonal dimension	27 inch
Viewable area W x H(mm)	599x337.5mm
Led Type	LED
Pixel Pitch	0.31125x0.31125mm
Screen Maximum Resolution	1920x1080
Color Depth	16.7 Million colors
Brightness(Typical)	250 cd/m ²
Auto Adjust	Yes
Monitor Aspect Ratio	16:9
Display Aspect Ratio	OSD selectable16:9 or 4:3
Contrast Ratio	1000:1
Response Time(ms)	5ms
View Angle H/V(degrees)	178°/178°
Port inputs	VGA+DP+HDMI
Speakers	Optional
OSD Languages	English, Spanish, German, Chinese, French, Italian
VESA Mounting Pattern	100 x 100 & 75x75mm
Net weight	7.5KG
Gross Weight	8.45KG
Power- Watts(on and standby)	< 35W
Power input (External)	12V,5A
Operating Temperature	0°C ~ 50°C
Storage Temperature	-20°C ~ 60°C

Operating Humidity	10 ~ 85%
Certifications	CE,FCC

Touch Panel Specification:

Type	27" PCAP TOUCH
Active Area	599x337.5mm
Glass Thickness	3mm glass
Surface Hardness	≥6H
Consumption	≤0.5W
Touch Points	10 Touch Points
Response Time	≤10ms
Touch Operation	Finger or Touch pen
Complaint O/S	WinXP,Win7,Win8,Win10,Android,Linux
Transparency	≥85%

3.Interface description:

HDMI,DP,VGA,USB,RJ45(OSD keypad only)



5.Drawing:

