

Functional Specifications

Display Details

LCD Technology	SPVA (super pattern vertical align)
Display Colors	1.07 billion
Pixel Pitch	.177 x .530mm
Brightness	700 cd/m2 (nit) typical
with touch sensor (max.)(1)	610 cd/m2 (nit) typical
Contrast Ratio (2)	4000:1 typical
Viewing Angle	Horizontal/Vertical: 178 degrees typical
Video Response Time (3)	6.5 ms typical
Refresh Rate	60Hz
Control Type	OSD
Native Resolution	1920x1080

(1) Brightness measured on a display with 3M™ Projected Capacitive sensor.

(2) Measured at a contrast ratio of 10.

(3) Gray to Gray

Touch Details

Number of Touch Points	60 points with palm rejection
Touch Point Speed (4)	12 milliseconds
Input Type	Finger, thin glove
Touch Communication	Auto detecting, USB and RS232 (Serial)
Operating System Support	Windows 8 / 7/ Vista / XP, Linux, Mac

(4) up to 20 touches



Physical Specifications

Product Details

Operating Environment	0 to +40 degrees C, relative humidity, non-condensing 90%
Storage Environment	-10 to +60 degrees C
Video Input	DVI, VGA, HDMI, DP (HDCP)
VESA Pattern	400mm x 400mm
Power Supply	Internal 110/220 VAC Power Supply
Power Consumption	TBD
RoHS Compliant	Yes
Agency Approvals	FCC-B, CE, TUV

Dimensions and Weight

Display Area (WxH) (viewing area)	1018.08 x 572.67mm 40.08 x 22.55 inches
Packaging (WxHxD)	TBD
Display weight	57 lbs
Packaging/Display weight	TBD

Ordering Information

Part Number	98-0003-4107-7
-------------	----------------



3M Touch Systems

Subsidiary of 3M Company
501 Griffin Brook Park Drive
Methuen, MA 01844 U.S.A.

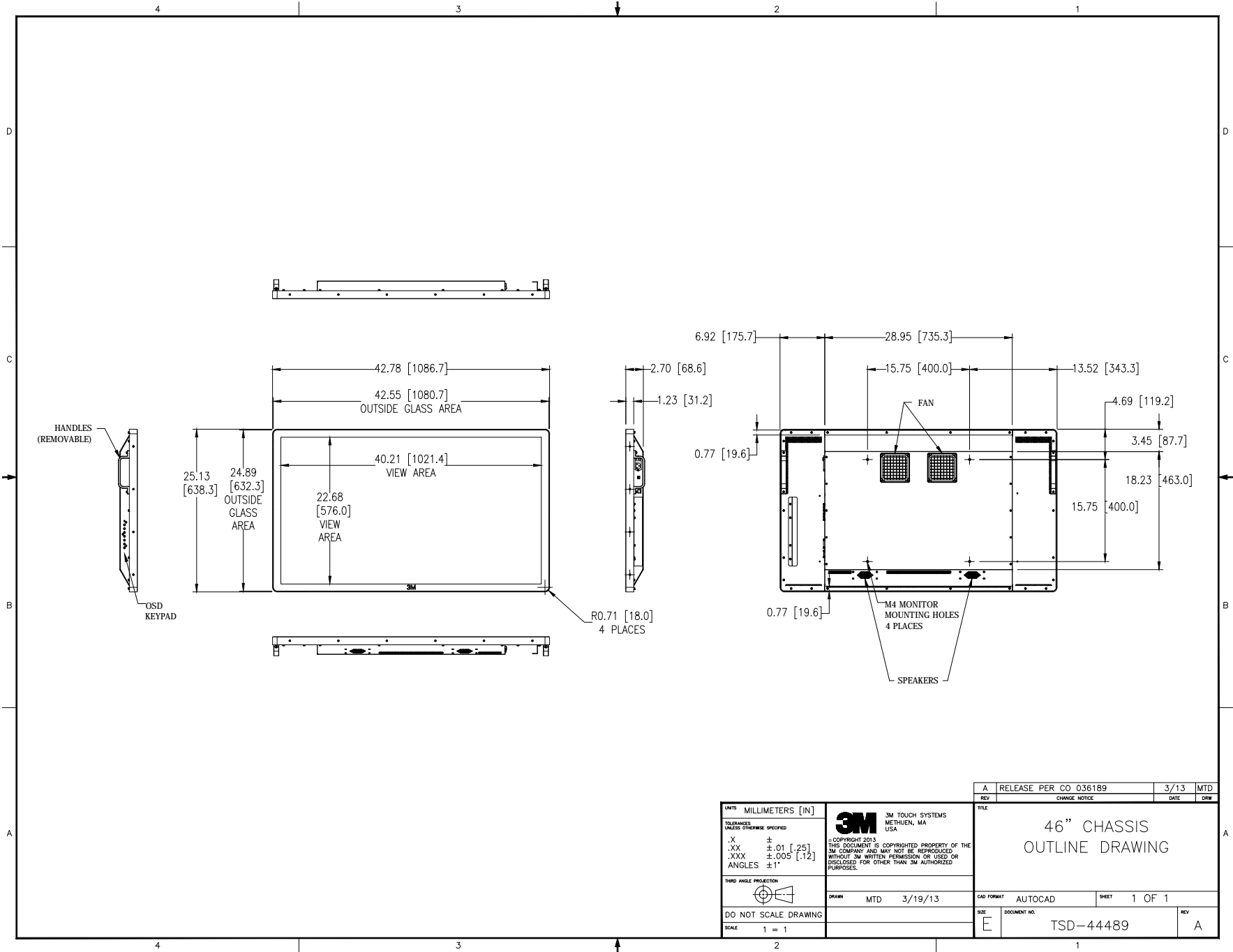
1-888-659-1080

www.3M.com/touch

RoHS Directive compliant: In accordance with European Directive 2002/95/EC, "RoHS Directive compliant" means that the product or part does not contain any of the following substances in excess of the following maximum concentration values in any homogeneous material, unless the substance is in an application that is exempt under RoHS: (a) 0.1% (by weight) for lead, mercury, hexavalent chromium, polybrominated biphenyls or polybrominated diphenyl ethers; or (b) 0.01% (by weight) for cadmium. Unless otherwise stated by 3M in writing, this information represents 3M's knowledge and belief based on information provided by third party suppliers to 3M. (9/06)

IMPORTANT NOTICE TO PURCHASER: Specifications are subject to change without notice. These 3M Touch Systems' Products and software are warranted to meet their published specifications from the date of shipment and for the period stated in the specification. 3M Touch Systems makes no additional warranties, express or implied, including but not limited to any implied warranties of merchantability or fitness for a particular purpose. User is responsible for determining whether the 3M Touch Systems Products and software are fit for User's particular purpose and suitable for its method of production, including intellectual property liability for User's application. If the Product, software or software media is proven not to have met 3M Touch Systems' warranty, then 3M Touch Systems' sole obligation and User's and Purchaser's exclusive remedy, will be, at 3M Touch Systems' option, to repair or replace that Product quantity or software mediator to refund its purchase price. 3M Touch Systems has no obligation under 3M Touch Systems' warranty for any Product, software or software media that has been modified or damaged through misuse, accident, neglect, or subsequent manufacturing operations or assemblies by anyone other than 3M Touch Systems. 3M Touch Systems shall not be liable in any action against it in any way related to the Products or software for any loss or damages, whether non-specified direct, indirect, special, incidental or consequential (including downtime, loss of profits or goodwill) regardless of the legal theory asserted. (7/02)





HANDLES
(REMOVABLE)

OSD
KEYPAD

R0.71 [18.0]
4 PLACES

FAN

M4 MONITOR
MOUNTING HOLES
4 PLACES

SPEAKERS

UNITS MILLIMETERS [IN]
TOLERANCES UNLESS OTHERWISE SPECIFIED
.X ±
.XX ±.01 [.25]
.XXX ±.005 [.12]
ANGLES ±1°

THIRD ANGLE PROJECTION

DO NOT SCALE DRAWING
SCALE 1 = 1

3M 3M TOUCH SYSTEMS
METHUEN, MA
USA
© COPYRIGHT 2013
THIS DOCUMENT IS COPYRIGHTED PROPERTY OF THE
3M COMPANY AND MAY NOT BE REPRODUCED
WITHOUT 3M WRITTEN PERMISSION OR USED OR
DISCLOSED FOR OTHER THAN 3M AUTHORIZED
PURPOSES.

DRAWN MTD 3/19/13

A	RELEASE PER CO 036189	3/13	MTD
REV	CHANGE NOTICE	DATE	DRW

TITLE	46" CHASSIS OUTLINE DRAWING		
CAD FORMAT	AUTOCAD	SHEET	1 OF 1

SIZE	DOCUMENT NO.	REV
E	TSD-44489	A